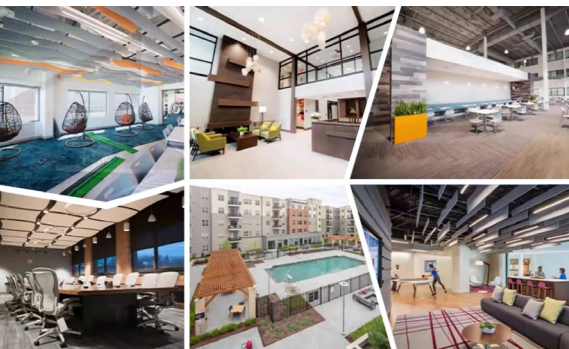


Construction Company, Erland, Stays at the Forefront of their Industry with Thrive's Advanced IT and Security Solutions



ERLAND.

Vertical

- Construction Management

Services

- Advisory Services
- Backup
- Cloud
- Disaster Recovery
- End User Support
- Managed Infrastructure
- Microsoft 365
- Security

"One of the main benefits for me and my relationship working with Thrive is the trust that I have in the company as a whole. I know if I need assistance with something that may seem small to others but is a huge deal to me that they will be there to assist me with it. Trust to me is a major factor in any relationship."

Bernadette Flaherty
IT Manager, Erland

Erland, a Massachusetts-based construction management company wanted assurance that their technology was being managed securely and efficiently. To achieve that peace of mind, they partnered with Thrive. Thrive worked with them to modernize their infrastructure and assess their cybersecurity posture, ensuring Erland remained competitive in an industry not always known for their investment in technology.

Erland delivers construction management services across a wide range of industries, including the Academic, Corporate, Commercial, Advanced Technology/ Life Sciences, Residential, Hospitality, and Senior Living markets. With one IT resource on staff, Erland recognized the value in outsourcing the tools and processes required to keep their business running smoothly and safely. For over 20 years, Thrive has been an instrumental partner, providing systems, support, and security to Erland's team, helping them meet project deadlines while juggling the demands of modern business operations.

Why Thrive Was Chosen

When Bernadette Flaherty joined the company in 1999, she had no idea she would be their tech resource. Without a background in technology, but willing to do whatever was needed, she dove in and became Erland's IT Manager. She knew managing every aspect of their IT was not a one-person job, so she wanted to find a partner who could supplement the work she was doing.

"Thrive was somewhat familiar with our environment because of a previous Citrix project. Because I was new to IT, and I was familiar with them, I didn't need to look anywhere else," recalled Flaherty. She was right - as technology has evolved, so too has the partnership between Erland and Thrive.

Strategic Technology Upgrades and Ongoing Deployment of Essential Security Measures

Migrations have been an ongoing part of Erland's relationship with Thrive. From Citrix to remote desktops, Exchange to O365, and physical servers to Thrive's cloud platform, Erland continued to invest in their business and their future.

Tools like online phishing testing and security training give Erland's leadership the confidence that their entire team is actively helping to protect the business they've built from the threat of data theft or system intrusion. "Several years ago, somebody on our team at Thrive had recommended the cyber training, it's called KnowBe4, and that has helped the end users tremendously," said Flaherty.

As a trusted partner, Thrive takes the burden of managing IT systems off Erland's shoulders, ensuring all their day-to-day IT needs are monitored and managed in one place. Thrive's expert team of skilled professionals delivers proactive monitoring, maintenance, and mitigation, backed by top-notch support and our 24x7x365 Network Operations Center.



Thrive's Impact

Thrive's people, especially the account manager and vCIO, have been instrumental in the success of this partnership. They take the time to truly understand Erland's needs, responding promptly and addressing every concern along the way. The team's transparent communication and proactive approach make Erland feel valued and supported. "We have a very good working relationship. We've been with Thrive for so long, it's almost like a friendship now. That's the way it should be, it's so much easier," remarked Flaherty.

By blending advanced technology with a genuine dedication to customer success, Thrive has solidified Erland's confidence in the partnership. The family-owned business that has seen many changes over the years finds comfort in knowing their team at Thrive is working around the clock to protect all they've worked so hard to build.

The two most significant impacts of Erland's relationship with Thrive are time savings and peace of mind. By handling necessary, but sometimes confusing or tedious tasks, like license management, Thrive gives time back to Flaherty that could be better spent elsewhere. Moving to the cloud also freed up time that was previously spent exchanging tapes in their server room or waiting for a part to arrive when a piece of hardware failed.

Because of strategic planning and regular meetings, Erland knows they have in Thrive a partner that will always help them leverage proven technologies to make their operations more efficient and secure.

About Thrive

Thrive delivers global technology outsourcing for cybersecurity, Cloud, networking, and other complex IT requirements. Thrive's NextGen platform enables customers to increase business efficiencies through standardization, scalability, and automation, delivering oversized technology returns on investment (ROI). They accomplish this with advisory services, vCISO, vCIO, consulting, project implementation, solution architects, and a best-in-class subscription-based technology platform. Thrive delivers exceptional high-touch service through its POD approach of subject matter experts and global 24x7x365 SOC, NOC, and centralized services teams. Learn more at www.thrivenextgen.com or follow us on [LinkedIn](#).